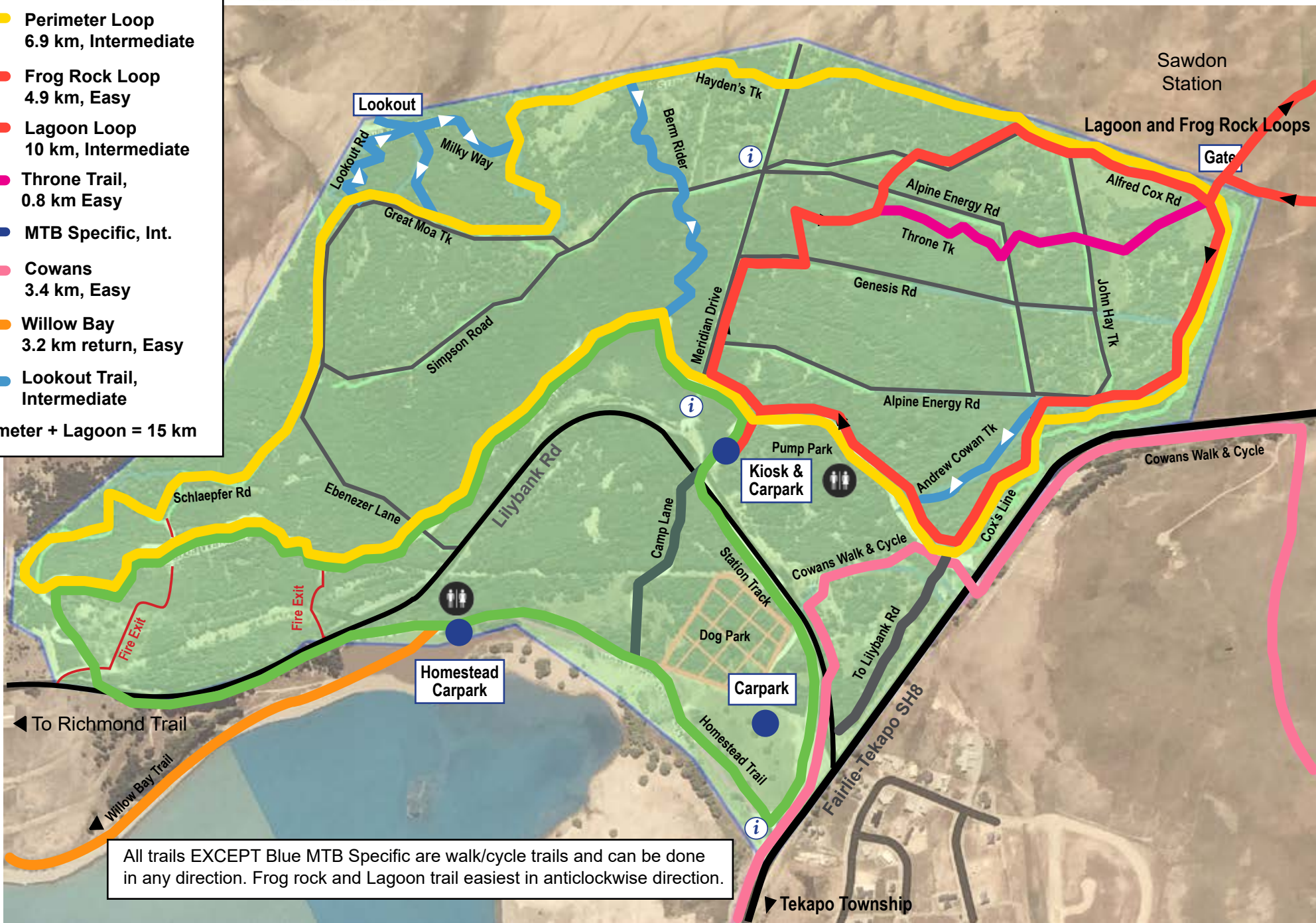




- █ Family Loop  
4.4 km, Easy
- █ Perimeter Loop  
6.9 km, Intermediate
- █ Frog Rock Loop  
4.9 km, Easy
- █ Lagoon Loop  
10 km, Intermediate
- █ Throne Trail,  
0.8 km Easy
- █ MTB Specific, Int.
- █ Cowans  
3.4 km, Easy
- █ Willow Bay  
3.2 km return, Easy
- █ Lookout Trail,  
Intermediate

Perimeter + Lagoon = 15 km



All trails EXCEPT Blue MTB Specific are walk/cycle trails and can be done in any direction. Frog rock and Lagoon trail easiest in anticlockwise direction.

► Tekapo Township